

CFS 55 or 85 Watt Surface Mount 1X1

Available in lamp color temperatures 3000K, 4000K, or 5000K.

Part Number:

55 Watt: CFS-PHSM/55

85 Watt: CFS-PHSM/85

FEATURES: Injection molded clear prismatic polycarbonate diffuser.

ELECTRICAL: UL listed for wet locations for ceiling mount and damp locations for wall mount. 55 or 85 watt, 120 through 277 VAC. (must specify)

HOUSING: Die cast aluminum. A neoprene gasket eliminates moisture, dust and insects.

DIFFUSER: Clear prismatic polycarbonate with UV inhibitors to minimize discoloration.

MOUNTING: Wall or ceiling mount for indoor or outdoor application.

HARDWARE: Standard tamper proof torque stainless steel screws available.



Induction lighting Features

No electrodes or filaments

- *100,000 hrs rated average life.
- *Low lumen depreciation of <30% @ 60,000 hours.
- *Low operating temperature of components.

High-frequency operation

- *High system efficacy(65-70lm/W)
- *No flickering
- *No stroboscopic effect
- *No noise

Electronic control

- *Output-protected HF generator

Instant (re-)start

- *Light available instantly when needed
- *Short ignition time <0.5sec

3-line fluorescent coating

- *Choice of color temperature
- *White light
- *Excellent color rendition (CRI 85)
- *No color deviation

Induction Lighting Benefits

- *High reliability and virtually maintenance-free operation.
- *Lasting light output right through life time.
- *Increased safety, more standard luminaire construction.
- *Economic, environment-friendly lighting in situations with long burning hours.
 - *Restful non-fatiguing light.
 - *No danger with rotating machinery.
 - *Non-disturbing in operations.
- *Automatic switch-off in case of lamp or power coupler failure.
 - *Generator resets 15-30 seconds after switch off.
 - *Suitable for security and safety lighting.
 - *More comfort.
- *Useful light immediately after switch-on.
- *Installation can be matched to lighting situations and requirements.
- *Uniform predictable lighting results throughout larger installations; color maintained through life.

INDUCTION LIGHTING

Induction lighting makes use of a technology which is fundamentally different from that of incandescent lamps or today's conventional gas discharge lamps. Instead of the glowing filaments of incandescent lamps, or the electrodes used in conventional gas discharge lamps, light generation is by means of induction— the transmission of energy via a magnetic field— combined with a gas discharge. Combining the basic principles of induction and gas discharge, this revolutionary concept in light generation offers benefits never before possible.

All CFS Inc. products come with a 5 year warranty.

CFS INC.

3 Adams Street- Belvidere, NJ 07823- Tel: 908-475-8991 Fax: 973-729-1271

E-mail: info@cfsinc.us

Web Site: www.cfsinc.us

PHOTO METRICS FOR 55 WATT SURFACE MOUNT

Surface Mounted

Indoor/ Outdoor Applications

Specify source color temperature 3000K, 4000K or 5000K

Luminaire: Cast aluminum housing, formed white enamel aluminum reflector, clear prismatic polycarbonate lens.

Lamp: One 55 Watt Induction lamp rated at 3500 lumens.

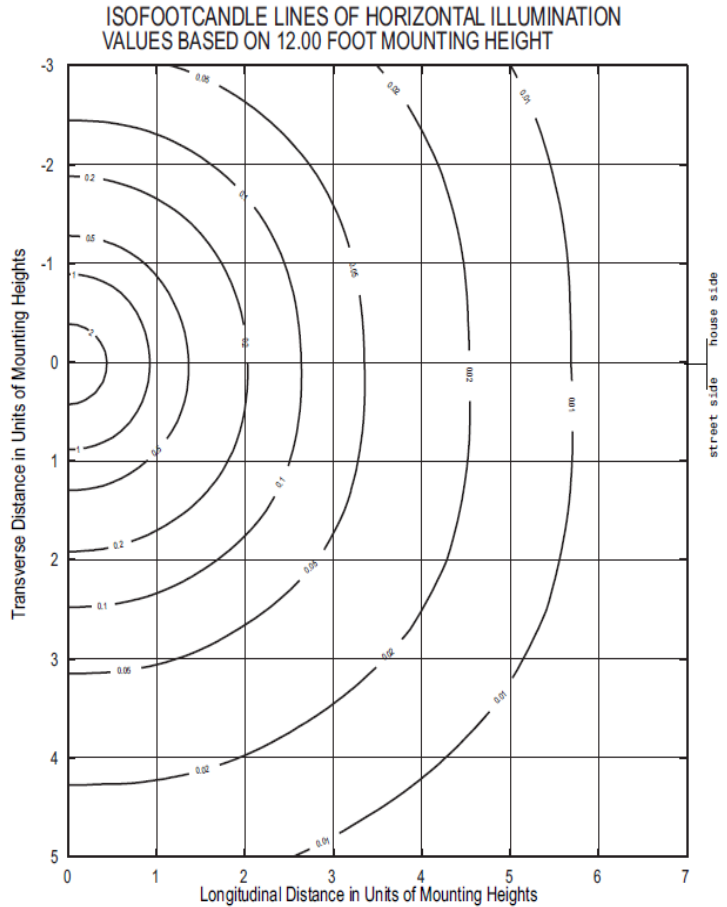
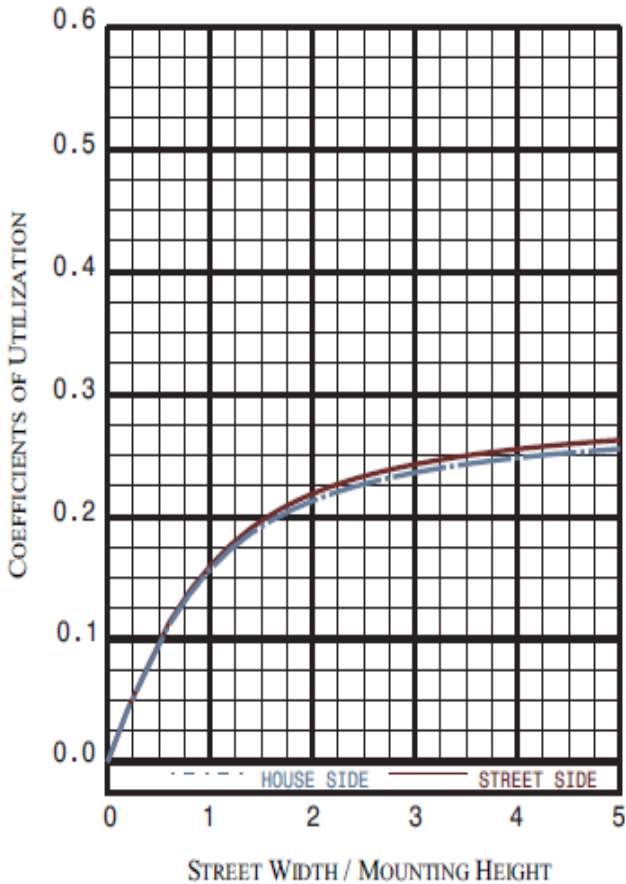
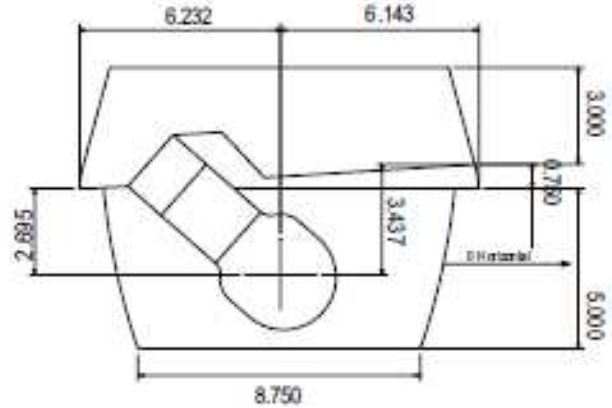
High frequency Generator: QL 55 Watt 100– 120V

Electrical Values: 120.0 VAC, 0.4269A, 50.33W

IES CLASSIFICATION: AREA LIGHT
CUTOFF CLASSIFICATION: NON-CUTOFF

FLUX DISTRIBUTION

LUMENS	DOWNWARD	UPWARD	TOTALS
HOUSE SIDE	988.98 (28.3%)	305.17 (8.7%)	1294.15 (37.0%)
STREET SIDE	1022.16 (29.2%)	323.48 (9.2%)	1345.65 (38.4%)
TOTALS	2011.14 (57.5%)	628.66 (18.0%)	2639.80 (75.4%)



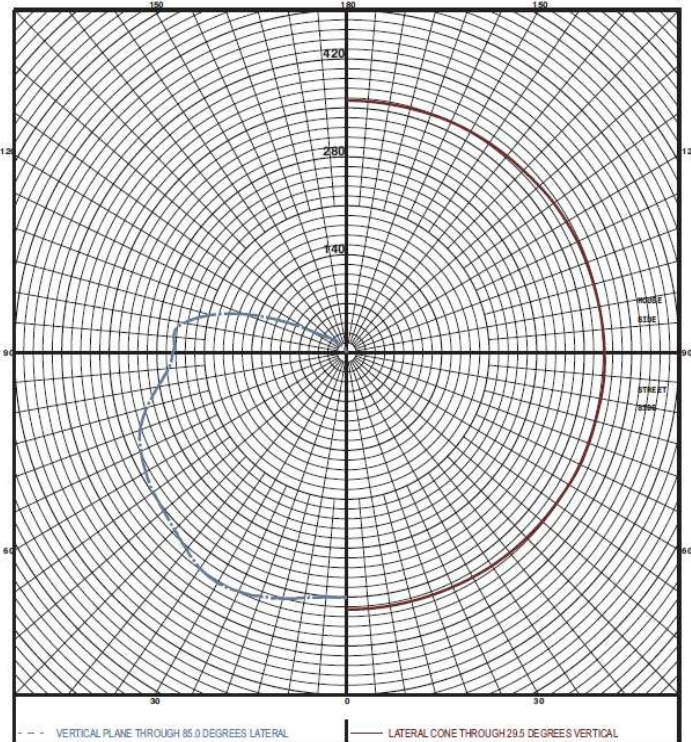
CANDELA DISTRIBUTION

	0	5	15	25	35	45	55	65	75	85	90
180	0	0	0	0	0	0	0	0	0	0	0
175	0	0	0	0	0	0	0	0	0	0	0
165	0	0	0	0	0	0	0	0	0	0	0
155	2	2	1	0	0	0	0	0	1	2	2
145	10	10	9	7	6	6	6	8	10	11	11
135	21	21	19	17	18	18	18	19	21	24	24
125	36	36	34	34	35	35	36	37	38	41	42
115	92	92	90	89	87	87	93	99	102	108	110
105	174	174	180	188	193	205	222	227	217	207	208
95	214	215	229	243	256	280	302	303	281	256	252
90	213	215	229	243	256	282	303	303	281	256	251
87.5	215	217	231	247	260	284	305	304	282	259	253
85	219	221	236	251	264	287	308	307	286	264	257
82.5	225	227	241	256	269	291	312	313	294	273	266
80	233	234	248	263	277	298	318	320	303	282	277
77.5	242	243	256	270	284	305	325	327	311	293	289
75	249	251	263	278	293	313	334	334	321	305	300
72.5	259	260	271	286	299	319	339	341	329	315	311
70	268	269	279	293	305	323	342	345	336	324	320
67.5	276	277	286	298	310	326	342	347	341	330	327
65	283	284	291	302	314	331	344	349	343	335	331
62.5	290	291	298	306	318	335	346	351	346	339	336
60	296	296	302	310	322	336	346	351	348	342	339
57.5	303	303	309	316	325	336	346	352	351	346	343
55	310	310	316	321	327	336	346	353	353	348	346
52.5	316	316	321	326	331	339	348	353	355	350	348
50	320	320	324	329	336	344	351	355	356	353	350
47.5	324	325	329	335	344	350	355	359	359	355	353
45	330	331	335	343	351	357	360	362	362	359	358
40	345	346	350	354	363	369	370	370	369	367	368
35	358	359	360	364	369	374	377	377	378	377	377
30	368	368	368	370	372	375	377	379	381	380	380
29.5	368	368	368	370	373	375	377	380	380	381	380
25	371	370	371	372	373	375	377	378	378	377	377
20	370	371	370	370	370	372	372	372	371	371	371
15	367	367	367	367	366	366	366	365	365	364	364
10	361	361	360	360	360	359	358	358	357	356	355
5	355	355	355	355	354	354	353	353	352	351	351
0	350	350	350	350	350	350	350	350	350	350	350

CANDELA DISTRIBUTION

	95	105	115	125	135	145	155	165	175	180
180	0	0	0	0	0	0	0	0	0	0
175	0	0	0	0	0	0	0	0	0	0
165	0	0	0	0	0	0	0	0	0	0
155	2	1	0	0	0	0	0	0	1	1
145	11	10	8	6	5	5	6	8	9	9
135	24	22	20	19	18	17	18	20	22	22
125	42	40	40	39	38	38	38	38	39	40
115	110	107	102	93	85	84	86	84	84	84
105	208	215	216	210	203	191	179	160	142	141
95	254	265	272	268	257	242	223	193	164	159
90	253	265	272	269	257	241	225	197	168	162
87.5	255	268	277	275	262	246	230	203	175	169
85	260	273	283	283	271	255	240	213	187	180
82.5	269	282	291	292	280	265	250	225	200	194
80	279	291	300	300	289	274	261	238	215	210
77.5	290	300	308	308	297	283	270	249	229	224
75	301	309	316	314	304	291	277	258	241	237
72.5	310	317	322	319	308	294	281	266	251	249
70	319	322	325	321	309	297	285	271	260	257
67.5	325	326	325	320	311	298	286	276	266	266
65	329	328	325	320	312	299	287	279	272	271
62.5	334	331	326	320	313	301	290	282	277	276
60	337	333	327	321	313	302	293	287	282	282
57.5	340	336	329	323	315	305	299	294	289	289
55	343	339	332	327	321	313	306	301	296	295
52.5	345	342	337	334	331	324	316	310	304	303
50	348	346	343	343	341	335	327	321	316	315
47.5	352	351	350	350	350	345	338	331	326	325
45	357	357	356	357	358	353	346	340	336	335
40	368	368	368	369	369	363	356	352	349	349
35	377	376	375	373	371	367	363	359	357	358
30	380	377	375	372	369	366	364	361	360	361
29.5	379	377	375	373	368	366	364	361	360	361
25	376	373	371	368	366	363	360	359	358	358
20	370	367	365	363	361	358	356	355	355	355
15	363	360	359	356	353	352	351	350	351	351
10	355	353	351	350	349	348	347	347	346	348
5	351	350	349	348	347	347	347	347	347	347
0	350	350	350	350	350	350	350	350	350	350

MAXIMUM PLANE AND CONE PLOTS OF CANDELA



FLUX

ZONE	LUMINAIRE LUMENS	% OF LAMP LUMENS
FORWARD LIGHT	1022	29.2
FL (0°-30°)	155	4.4
FM (30°-60°)	402	11.5
FH (60°-80°)	317	9.1
FVH (80°-90°)	148	4.2
BACK LIGHT	989	28.3
BL (0°-30°)	152	4.3
BM (30°-60°)	395	11.3
BH (60°-80°)	304	8.7
BVH (80°-90°)	138	3.9
UPLIGHT	629	18
UL (90°-100°)	270	7.7
UH (100°-180°)	358	10.2
TRAPPED LIGHT	860	24.6

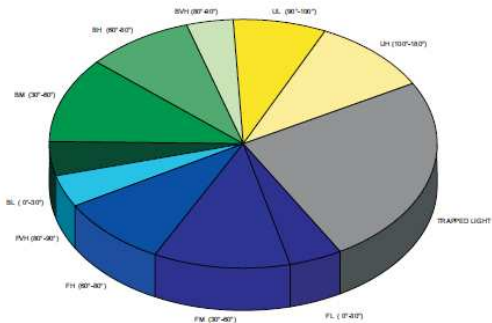
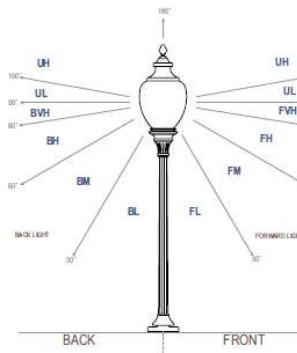


PHOTO METRICS FOR 85 WATT SURFACE MOUNT

Surface Mounted

Indoor/ Outdoor Applications

Specify source color temperature 3000K, 4000K or 5000K

Luminaire: Cast aluminum housing, formed white enamel aluminum reflector, clear prismatic polycarbonate lens.

Lamp: One 85 Watt Induction lamped rated at 6000 lumens.

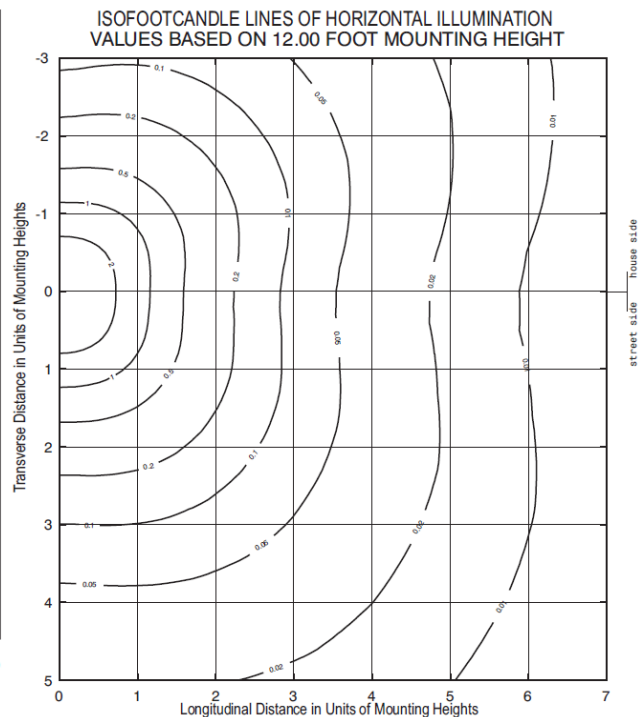
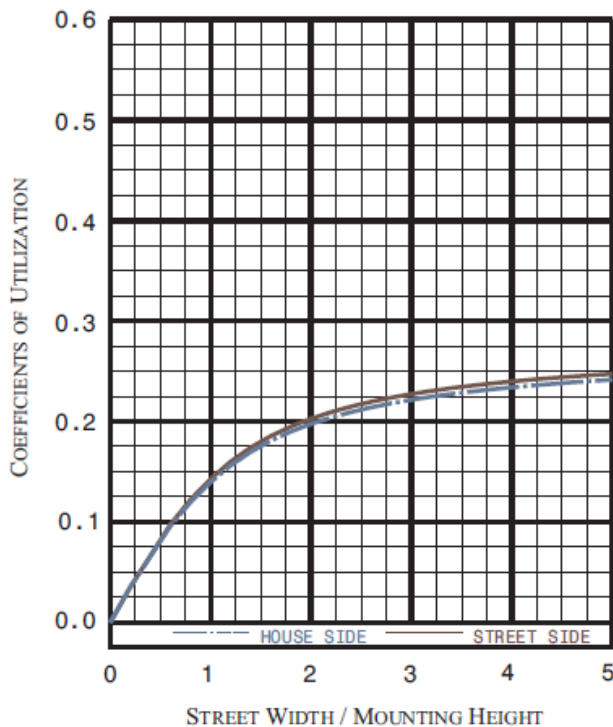
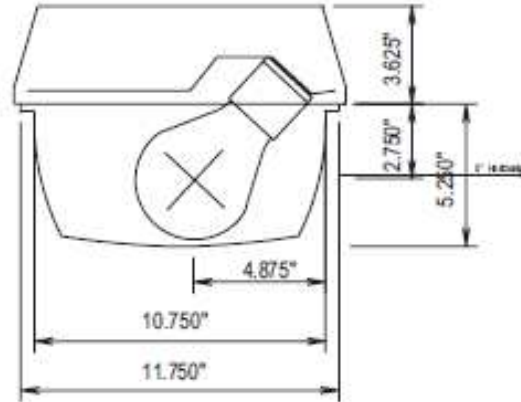
High frequency Generator: QL 85 Watt 100– 120V

Electrical Values: 120.0 VAC, 0.621A, 73.64W

IES CLASSIFICATION: AREA LIGHT
CUTOFF CLASSIFICATION: NON-CUTOFF

FLUX DISTRIBUTION

LUMENS	DOWNWARD	UPWARD	TOTALS
HOUSE SIDE	1624.14 (27.1%)	529.85 (8.8%)	2154.00 (35.9%)
STREET SIDE	1656.19 (27.6%)	536.51 (8.9%)	2192.69 (36.5%)
TOTALS	3280.33 (54.7%)	1066.36 (17.8%)	4346.69 (72.4%)



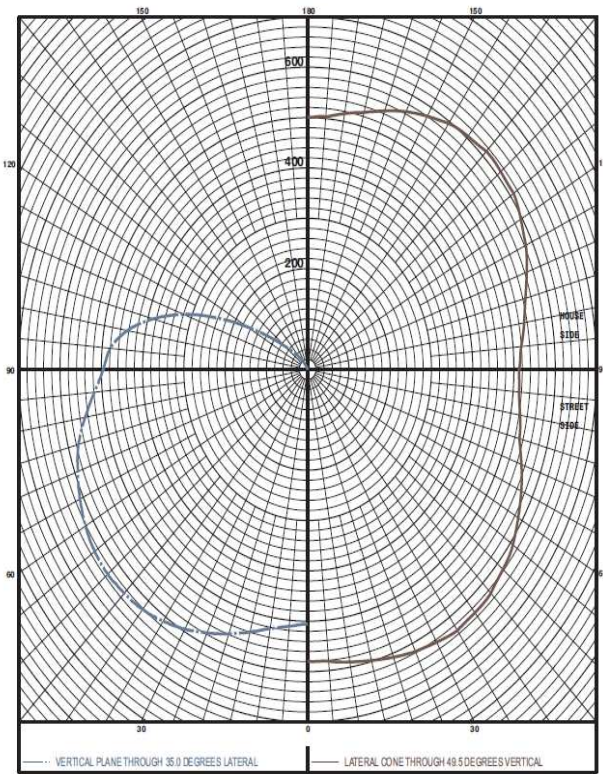
CANDELA DISTRIBUTION

	0	5	15	25	35	45	55	65	75	85	90
180	0	0	0	0	0	0	0	0	0	0	0
175	0	0	0	0	0	0	0	0	0	0	0
165	0	0	0	0	0	0	0	0	0	0	0
155	8	7	6	3	1	1	2	5	7	8	7
145	28	27	25	21	18	18	17	21	24	25	25
135	53	51	48	46	48	47	43	38	42	43	43
125	106	103	102	109	111	105	94	79	71	71	71
115	185	182	199	229	241	234	213	177	138	124	124
105	254	256	304	359	387	381	353	310	234	194	193
95	289	298	364	436	479	478	445	397	306	244	242
90	303	312	378	449	495	493	455	410	320	255	251
87.5	314	323	388	458	506	504	464	418	328	263	259
85	331	340	403	472	519	517	478	430	341	277	272
82.5	351	359	420	486	533	532	494	445	358	294	289
80	374	381	438	503	547	548	511	459	374	313	309
77.5	399	405	460	522	562	563	526	475	392	334	330
75	421	428	480	539	575	575	540	488	407	354	352
72.5	443	450	498	552	585	584	551	498	422	374	372
70	463	470	514	564	593	592	560	510	436	392	391
67.5	483	488	529	575	601	598	569	522	451	410	409
65	500	505	543	584	610	605	578	533	464	427	427
62.5	517	521	555	593	615	613	587	542	477	444	444
60	533	536	566	600	622	619	594	550	490	461	460
57.5	546	550	576	608	627	623	600	558	502	476	476
55	560	563	585	612	630	627	605	563	513	490	490
52.5	570	573	591	616	632	629	607	568	523	502	502
50	578	580	597	618	632	630	608	570	530	512	511
49.5	579	581	598	618	633	628	607	571	531	514	512
47.5	585	587	601	618	630	627	607	572	538	520	519
45	591	593	605	619	629	625	605	572	542	527	526
40	601	603	610	617	621	616	598	573	550	538	536
35	604	605	609	610	611	604	589	570	553	542	540
30	599	598	599	598	595	587	575	564	549	541	540
25	587	586	585	582	577	570	561	552	542	537	535
20	569	568	566	563	559	554	545	538	532	528	527
15	549	548	546	543	540	535	531	528	523	520	519
10	529	527	526	525	522	521	518	515	514	512	511
5	514	513	513	512	512	511	511	509	507	507	506
0	505	505	505	505	505	505	505	505	505	505	505

CANDELA DISTRIBUTION

	95	105	115	125	135	145	155	165	175	180
180	0	0	0	0	0	0	0	0	0	0
175	0	0	0	0	0	0	0	0	0	0
165	0	0	0	0	0	0	0	0	0	0
155	7	6	3	2	1	2	4	6	7	5
145	25	23	19	17	17	15	19	22	23	22
135	43	41	39	43	43	40	35	37	39	38
125	71	72	85	97	99	91	76	65	65	62
115	126	147	192	224	228	212	176	132	118	113
105	200	263	349	393	401	382	329	251	197	190
95	259	353	459	513	527	502	441	346	261	252
90	271	368	472	526	540	515	455	361	274	261
87.5	278	376	477	529	546	520	460	369	283	269
85	292	387	486	537	553	529	470	382	297	282
82.5	309	402	496	546	562	538	481	396	315	299
80	329	418	509	557	572	549	493	411	334	317
77.5	350	436	521	566	581	560	507	430	356	339
75	370	452	533	576	588	567	516	444	374	359
72.5	390	467	543	583	593	573	527	458	384	381
70	407	479	552	591	598	578	533	469	409	397
67.5	425	493	562	597	604	586	543	481	425	414
65	441	503	570	604	610	591	550	489	438	427
62.5	457	513	577	609	614	597	556	499	451	442
60	472	522	581	612	618	602	562	508	465	457
57.5	486	529	585	614	620	603	565	514	476	470
55	499	537	587	616	621	603	567	521	487	482
52.5	509	542	587	614	618	601	568	526	497	493
50	518	545	585	611	614	597	565	527	503	500
49.5	519	546	584	609	612	596	564	528	503	501
47.5	524	547	580	605	607	591	562	530	509	506
45	531	550	577	599	600	585	558	531	514	511
40	539	552	568	583	584	573	554	535	523	520
35	542	550	560	568	569	562	551	538	530	529
30	540	544	549	553	554	550	545	537	532	531
25	535	536	537	539	539	537	533	529	527	527
20	527	527	525	525	525	523	521	518	517	517
15	519	517	516	513	512	510	509	507	507	507
10	510	508	506	505	504	502	501	500	500	499
5	505	505	504	504	502	501	501	500	500	501
0	505	505	505	505	505	505	505	505	505	505

MAXIMUM PLANE AND CONE PLOTS OF CANDELA



FLUX

ZONE	LUMINAIRE LUMENS	% OF LAMP LUMENS
FORWARD LIGHT		
FL (0°-30°)	232	3.9
FM (30°-60°)	671	11.2
FH (60°-80°)	524	8.7
FVH (80°-90°)	230	3.8
BACK LIGHT		
BL (0°-30°)	221	3.7
BM (30°-60°)	641	10.7
BH (60°-80°)	523	8.7
BVH (80°-90°)	239	4
UPLIGHT		
UL (90°-100°)	427	7.1
UH (100°-180°)	640	10.7
TRAPPED LIGHT		
	1653	27.6

